



Camera Control



One-Stop RCP and PTZ Controllers

One Size *Never* Fits All

There's a model perfect for every unique space - and we've got it! No matter which SKAARHOJ panel you choose, the software is the same. Color, size, price, knobs and buttons? Just pick you favourite, it will work with your camera!



Sony FX9



PTZ View - Color Thumbnails



PTZ Extreme - Large Scale, High Performance

- ★ A model perfect for every unique space
- ★ Software is the same on any panel
- ★ Ease of use meets flexibility



Canon CR-N700



RCP Pro



RCPv2 w/Fader



Color Fly - Multi Camera Controller



PTZ Wiz - Ultra Small

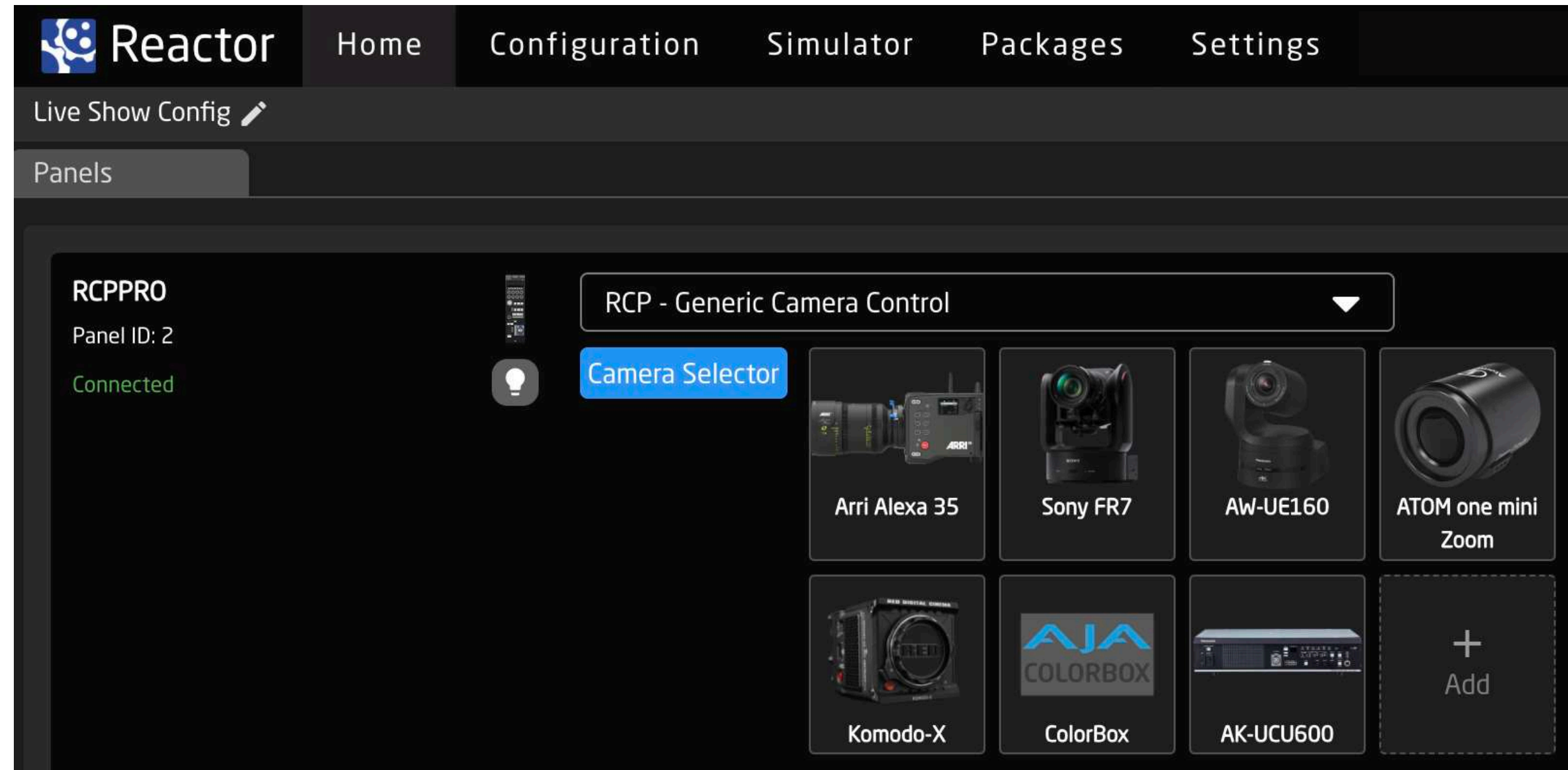


PTZ Fly - Straight Forward



PTZ Pro - The Classic Favourite

Mix and Match!



Reactor Home Screen - One-click search and select of cameras

In SKAARHOJ's built-in Reactor™ software for RCP and PTZ controllers, adding new cameras is a breeze. Use our sleek web UI to scan your network and add detected cameras with just one click. Even if you mix various camera types, SKAARHOJ products tailor the control settings to your chosen model, ensuring precise, model-specific controls. Multi camera control doesn't cost extra with SKAARHOJ! RCP Pro accommodates up to eight, and our PTZ controllers have no set limit – with users reporting successful connections to over 100 PTZ cameras!

- ★ Mix camera models and types
- ★ Control model specific settings
- ★ Easy setup and discovery over network
- ★ No extra license for many cameras



RCP Pro - up to eight cameras



ARRI Alexa 35



RED Komodo X



AtomOne Mini Zoom



Panasonic AW-UE160



Panasonic Studio Cameras



Sony FR7



AJA Colorbox



Sony FX6

AJA Color Box	BirdDog A300	Canon CR-X300	Everet EVP435	Marshall CV380-CS	Panasonic AW-HE130	Sony BRC-H800
AIDA GEN3G200	BirdDog P100	Canon EOS-C300	Everet EVP435N	Marshall CV420-30x	Panasonic AW-HE145	Sony BRC-H900
AIDA HD-NDI-200	BirdDog P110	Canon EOS-C500	Everet EVPRO2	Marshall CV420-CS	Panasonic AW-HE20	Sony BRC-X1000
AIDA PTZ-NDI-X18-B	BirdDog P120	Canon EOS-C70	Everet EVX220	Marshall CV503	Panasonic AW-HE40	Sony BRC-X400
AIDA PTZ-X12-IP	BirdDog P200	Canon XF605	Everet EVX230	Marshall CV503-WP	Panasonic AW-HE42	Sony BRC-X401
AIDA PTZ-X20-IP	BirdDog P240	Data Video PTR 10	Generic Visca	Marshall CV504	Panasonic AW-HE50	Sony BRC-Z700
AIDA PTZ3-X20L	BirdDog P400	DataVideo BC200	IO Industries Victorem	Marshall CV504-WP	Panasonic AW-HE60	Sony FR7
AIDA UHD100	BirdDog P4K	DataVideo BC80	JVC GY-HC550	Marshall CV506	Panasonic AW-HR140	Sony FS7
AIDA UHD6GX12L	BirdDog PF120	DATAVIDEO PTC140 (s)	JVC GY-HC900	Marshall CV506-H12	Panasonic AW-UE100	Sony FX6
AJA RovoCam	BMD Micro Studio Camera 4K	DataVideo PTC150	JVC GY-HM660	Marshall CV508	Panasonic AW-UE150	Sony FX9
Angekis Saber	BMD Pocket Cinema 4K	DataVideo PTC200	JVC KY-PZ100	Marshall CV566	Panasonic AW-UE160	Sony HDC-P31
ARRI Alexa 35	BMD Pocket Cinema 6K	DreamChip ATOM one	JVC KY-PZ400	Marshall CV568	Panasonic AW-UE20	Sony ILME-FR7
ARRI Alexa Mini	BMD Pocket Cinema 6K Pro	DreamChip ATOM one mini	JVC PTZ-100	Marshall CV620	Panasonic AW-UE40	Sony PXW-750
ARRI Alexa Mini LF	BMD Studio Camera	DreamChip ATOM one mini Zoom	JVC PTZ-200N	Marshall CV630	Panasonic AW-UE50	Sony PXW-Z280
ARRI Amira	BMD Studio Camera 4K	DreamChip ATOM one SSM500	JVC PTZ-400N	Marshall CV730	Panasonic AW-UE70	Sony S700P Protocol
AVER DL10	BMD Studio Camera 4K Plus	eMotimo ST4	Kessler Cine Shooter	MiniZeus	Panasonic AW-UE80	Sony SRG-300
AVER DL30	BMD Studio Camera 4K Pro	eMotimo ST4 Slider	Kessler Second Shooter	Minnray PTZ	Panasonic CX350	Sony SRG-X400
AVER PTC115	BMD URSA Broadcast	eMotimo ST4.3 Slider	Lumens VC-A50P	NewTek NDI-HX-PTZ1	Panasonic EVA1	Sony SRG-XB25
AVER PTC310	BMD URSA Broadcast G2	Everet EVC312	Lumens VC-A61P	NewTek NDI-HX-PTZ3	PTZOptics Cameras	Sony SSCP Protocol
AVER PTC310UV2	BMD URSA Mini 4.6K	Everet EVC320	Lumens VC-R30	NewTek PTZ-UHD-NDI	PTZOptics ZCAM	Sony Venice
AVER PTC330UV2	BMD URSA Mini 4K	Everet EVN210	Lumix BGH1	OptoVER K-M	RED Komodo	Vaddio RoboSHOT 12 HD-SDI
AVER PTC500	BMD URSA Mini Pro 12K	Everet EVN220	Lumix BS1H	OptoVER K-NM	RED Komodo-X	Vaddio RoboSHOT 12 HDBT
AVER PTZ310	BMD URSA Mini Pro 4.6K	Everet EVP212	Marshall CV344	OptoVER P-A	RED V-Raptor	Vaddio RoboSHOT 12 HDMI
AVER PTZ310UNV2	BMD URSA Mini Pro 4.6K G2	Everet EVP212N	Marshall CV346	OptoVER P-NA	Robyhead D1	Vaddio RoboSHOT 20 UHD
AVER PTZ330	Bolin	Everet EVP220	Marshall CV348	OptoVER P-U	Ross PivotCam	Vaddio RoboSHOT 30 HD-SDI
AVKANS	Bolin 4K	Everet EVP220N	Marshall CV350	PanaPod	Ross PTZ 12G	Vaddio RoboSHOT 30 HDBT
Avonic CM4x	Canon CR-N300	Everet EVP230	Marshall CV350-10XB	Panasonic AK-UB300	Rush Works PTX3	Vaddio RoboSHOT 30 HDBT
Avonic CM60	Canon CR-N500	Everet EVP230N	Marshall CV355-30x	Panasonic AK-UCU600	Salray Works N-Bot	Vaddio RoboSHOT 30 HDMI
Avonic CM7x	Canon CR-N700	Everet EVP412	Marshall CV366	Panasonic AW-HE120	SKY EYE-30HZ-S	Vaddio RoboSHOT 30E NDI
BirdDog A200	Canon CR-X300	Everet EVP412N	Marshall CV368	Panasonic AW-HE130	Sony BRC-H780	Vaddio RoboSHOT 40 UHD
						Zcam E2



Integrate

SKAARHOJ isn't just about camera control. We support video switchers, routers, and more. Our controllers integrate functions from all your devices. Select a camera and it shows on your preview monitor. Want tally in the camera selection buttons? We've got it.

- ★ Routing and Joystick Override
- ★ Red and Green Tally
- ★ Tally forwarded to cameras



PTZ Fly

Red and Green tally from switcher

Add commands to other hardware directly on the knobs and buttons

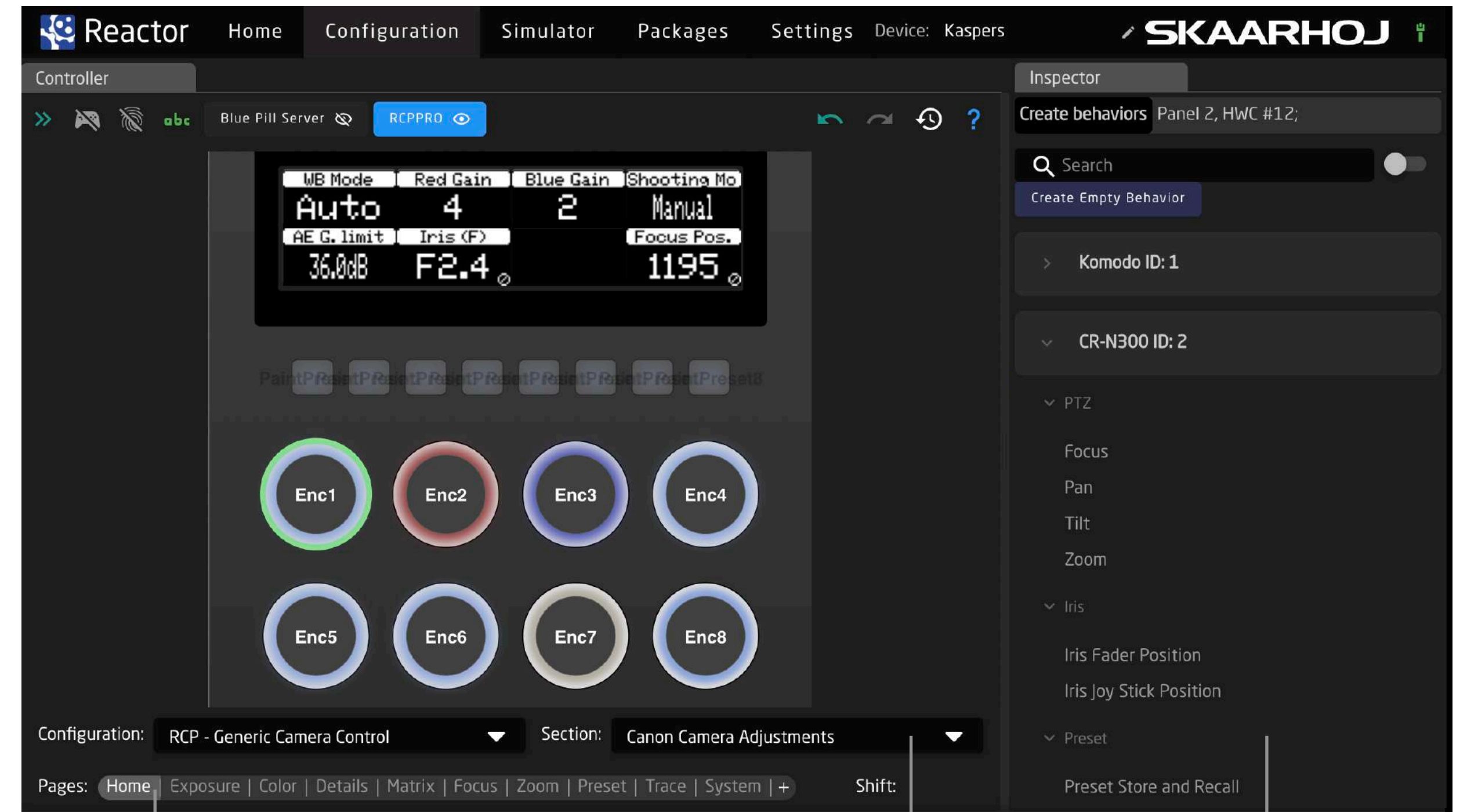
Selecting camera also signals a router to show camera on the monitor



Customize

Reactor™ powers all our controllers. With Reactor 2.0, customize your RCP or PTZ setting pages easily. Simply select a page, click component, and modify in the Inspector. Enhance default configurations non-destructively by adding functions on new pages.

- ★ Add new functions on pages
- ★ Reorganize menu contents
- ★ Few clicks and you're done



Add new pages with settings

Select the relevant section to edit

Add or change behaviors in a few clicks

Tradition and Innovation

Our vision is to *invent the future of live production control*. Daily we strive to think and re-think how the most valuable traditions of broadcasting control can be fused with the trends of tomorrow. How the soul of touching buttons and holding a joystick is preserved and enhanced for the next generation.



PTZ Extreme

- ★ Old virtues
- ★ Reimagined

High Precision 4-axis Hall Effect Joystick

Displays where you really need them

Ergonomic Handrest for joystick operation

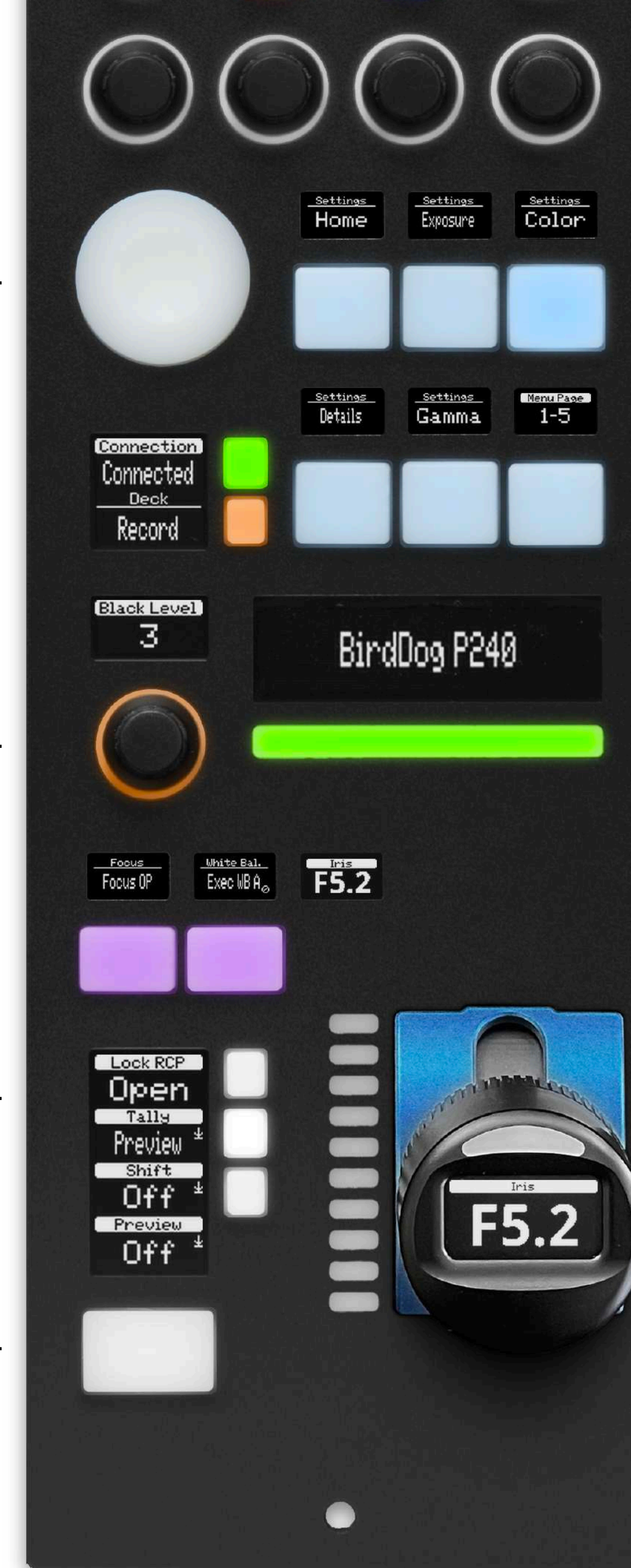
Joystick Pad allows the occasional pan-tilt control of a PTZ camera - even for the RCP operator

We use tactile encoders by default, providing a click feel with every turn. We know this works best across all use cases. However, if you prefer, smooth encoders are available upon request.

Option: Smooth Encoders

A display for the camera name, a tally LED bar, and GPIO ports on the back.

Single-piece solid metal casing



RCP Pro

SKAARHOJ controllers prioritize flexibility, using individual displays for buttons and knobs instead of one large screen. This design ensures intuitive use while remaining adaptable for future innovations.

SKAARHOJ's RCP joystick is probably the industry's coolest, blending future innovation with time-honored tradition. You will feel right at home, but our snappy joystick option might just be the upgrade you're looking for!

Option: Snappy Joystick

- Joystick Override
- Pedestal Ring
- Iris value display
- "Sony feel"

Fixed-position joysticks limit multi-camera RCP control. Our software provides solutions for seamless, continuous operation.

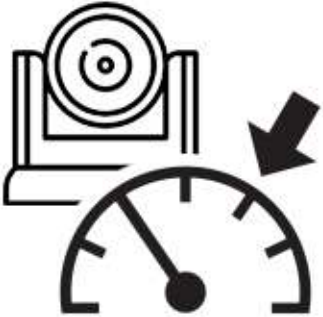
Supercharged

SKAARHOJ doesn't just focus on extensive, high quality camera integrations; we aim to enhance their capabilities and make them even more valuable for you. Below are some key features stemming from this innovative mindset.



Cruise Control

Set your camera in motion and let go of the joystick - the camera continues its path, like a slow pan or zoom. This function allows operators to keep multiple PTZ cameras in motion, creating the dynamic characteristic of a multi-operator production.



Labeled Presets

Assign names to your PTZ camera presets. The clear labels on SKAARHOJ controllers ensure easy recall, aiding operators in utilizing and remembering more preset positions.



PTZ Fly - Camera selector row doubles as preset selector row with UTF-8 labels in the displays.



PTZ Trace

This SKAARHOJ-made feature lets you record and replay PTZ camera movements. While some high-end cameras offer this natively, SKAARHOJ extends it to *any* model. By recording joystick speed commands, movements are replayed with precision. Certain models even support reverse playback and looping for continuous camera motion.

"Scene files" for any camera
Reactor™ lets you define camera parameters to store in a preset for later recall. High-end cameras call this scene-files but we made it available for any camera!

Visual Thumbnails
Controllers such as the PTZ View feature built-in color displays, showcasing thumbnails of the camera view at the time a preset was set. This visual aid is invaluable for inexperienced users, helping them easily recall intended preset positions. Ask us about supported camera models!



PTZ View



- ★ Enhancing already great cameras
- ★ Higher production quality with less people
- ★ Friendly to inexperienced users

Combo Devices



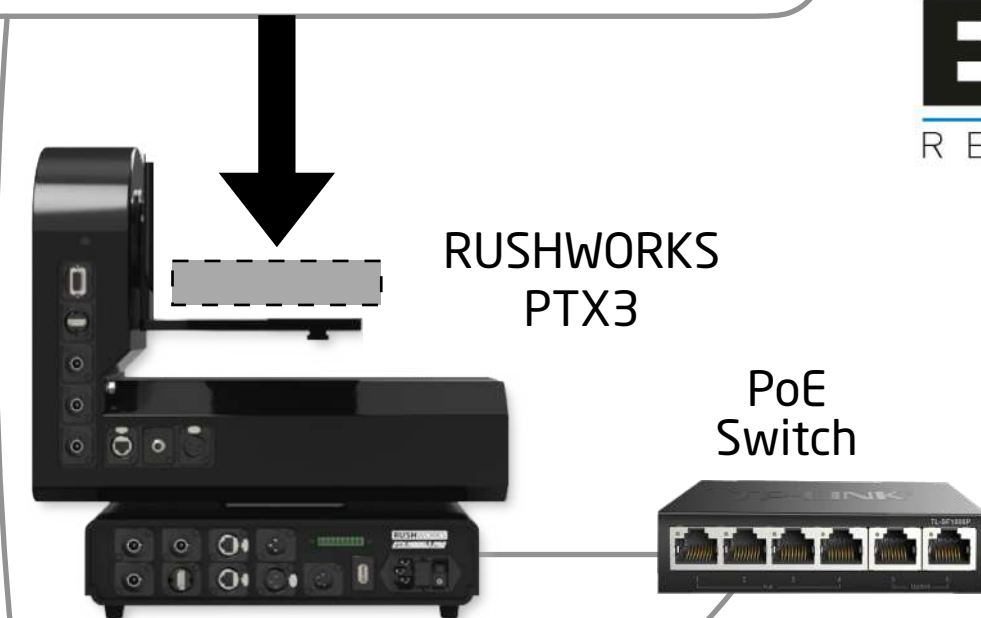
TILTA
Kessler

RUSHWORKS

eMotimo
camera robots

Dream CHIP

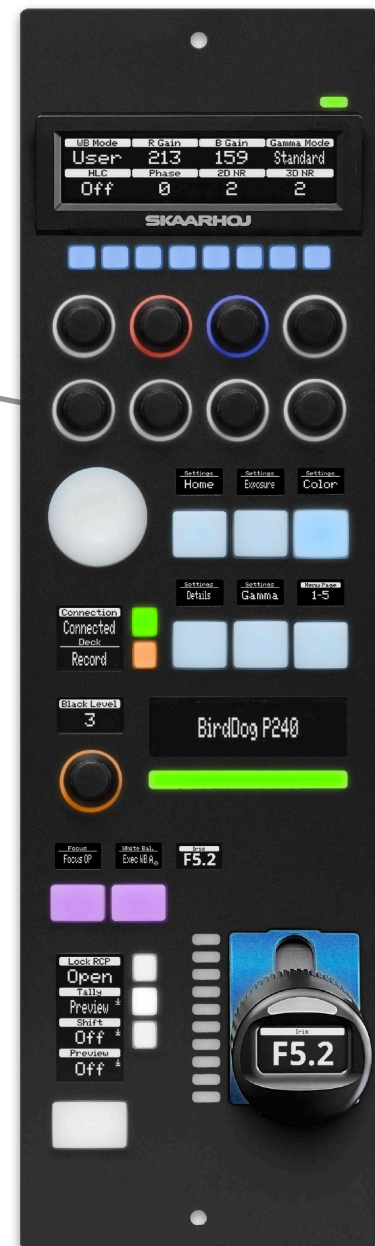
BR
REMOTE



Blue Pill IO Extension

- ★ PT-heads
- ★ Lenses
- ★ Sliders
- ★ Camera Bodies

! Many combinations are still in development. Ask us for details!



Limitless Ecosystem

SKAARHOJ's killer application might not be immediately apparent to you. However, it lies in the time proven benefits derived from an ecosystem where both hardware and software are modular. Device Cores communicate with cameras and devices, the Raw Panel™ protocol links control panels, and Reactor™ seamlessly integrates everything, allowing for simple configurations or in-depth customizations. There is so much you don't want to know now, but the answer is "Yes"!

Shoot, I need support setting this mess up. No worries! Enable "Remote Support" and we can login remotely and help!

Oh no, the Lumix camera takes only a single connection - phew, SKAARHOJ device cores facilitate multi master control of anything!

Trust me, a single network cable with PoE rocks!

What if I wanted a group of PTZ cameras to recall a preset with a single button... No problem, Reactor Multi Behaviors!

My joystick's deadzone and resolution should be higher - ah, nice, I can change the calibration profile!

Can my joystick have a non-linear mapping for speed control? Sure!

I like standing on my head... can I invert the pan, tilt and zoom in my PTZ controller? Yes, of course. We thought of that already.

What if I want my XYZ-router to drive the camera selection, can I... Yes, you can, with Virtual Triggers.

Can I group PTZ cameras together? Yes, there is a YouTube video for that...

What if I want less functionality for my operator? No problem, it's easy to remove or hide features!

...Just ask!

SKAARHOJ®

- ★ Panels for every space.
- ★ Mix camera models and types.
- ★ Full device support across all panels.
- ★ Direct support for 200+ camera models.
- ★ Compatible with PTZ, POV, Studio, and Cinema cameras.
- ★ Quick and easy setup.
- ★ Model-specific control settings.
- ★ No additional licensing fees for multiple cameras.
- ★ Routing and Joystick Override capabilities.
- ★ Red and Green Tally with forwarding to cameras.
- ★ Enhances the capabilities of your cameras.
- ★ Achieve production quality with fewer personnel.
- ★ User-friendly operation, even for novices.
- ★ Combo devices from lens, camera bodies and robotics.
- ★ Highly customizable.



This Booklet